

Snell & Wilmer

News Release

SNELL & WILMER WELCOMES FOUR ASSOCIATES TO THE ORANGE COUNTY AND LOS ANGELES OFFICES

LOS ANGELES AND ORANGE COUNTY (January 4, 2022) – Snell & Wilmer is pleased to announce [Chance Brooks](#), [Delilah R. Cassidy](#), [Alexis N. Flores](#), and [Ashleigh Luschei](#) have joined the firm's California offices as associates.



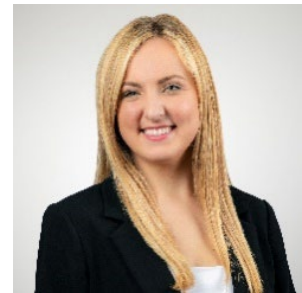
Chance Brooks



Delilah R. Cassidy



Alexis N. Flores



Ashleigh Luschei

Brooks is a real estate associate in the Los Angeles office. He received his J.D. from Georgetown University Law Center and his B.A. from University of Southern California, Los Angeles.

Cassidy is a labor and employment associate in the Orange County and Phoenix offices. Prior to joining Snell & Wilmer, she worked in the sports and entertainment field. She obtained her J.D. from Arizona State University, Sandra Day O'Connor College of Law and her B.A. in sports business and journalism.

Flores is a commercial litigation associate in the Orange County office. She received her J.D. from University of Notre Dame Law School and her B.A. from California Polytechnic State University, San Luis Obispo.

Luschei is a commercial finance and bankruptcy associate in the Orange County office. She received her J.D. from University of California, Irvine School of Law and her B.A. from University of California, Berkeley.

About Snell & Wilmer

Founded in 1938, Snell & Wilmer is a full-service business law firm with more than 450 attorneys practicing in 16 locations throughout the United States and in Mexico, including Los Angeles, Orange County, and San Diego, California; Phoenix and Tucson, Arizona; Denver, Colorado; Washington, D.C.; Boise, Idaho; Las Vegas and Reno, Nevada; Albuquerque, New Mexico; Portland, Oregon; Dallas, Texas; Salt Lake City, Utah; Seattle, Washington; and Los Cabos, Mexico. The firm represents clients ranging from large, publicly traded corporations to small businesses, individuals, and entrepreneurs. For more information, visit swlaw.com.

###